

GOOD SHEPHERD LUTHERAN CHURCH

A Congregation of the Evangelical Lutheran Church in America

... We Are God's People and the Sheep of God's Pasture ...

Psalm 100:3



February 5

ALL ARE WELCOME AT GOOD SHEPHERD LUTHERAN CHURCH.

God makes no exceptions. In the spirit of Jesus Christ, we offer trust and respect to all, including those who may experience alienation, distrust, or rejection. We rely on the healing, unconditional love of God to shape our community in the name of the Good Shepherd. In keeping with our welcome, Good Shepherd is a *Reconciling in Christ* partner congregation, affirming our welcome to persons of all sexual orientations, gender identities, and gender expressions, and our commitment to anti-racism work so that all may participate fully in the life of our congregation. We are an AMMPARO *Welcoming Congregation* - Accompanying Migrant Minors with Protection, Advocacy, Representation and Opportunities.

***Welcome guests! There is more information for you on the back of the bulletin.
The building is in the process of becoming carbon neutral. Please excuse the mess!***

ORDER OF WORSHIP

Evangelical Lutheran Worship-**ELW (red book)**, All Creation Sings-**ACS (purple book)**

Page numbers (P.) in front of ELW and hymn numbers (#) in back of ELW and ACS
congregational responses in **bold**; rise in body or spirit when indicated by *

GATHERING

GATHERING MUSIC: “Memory Mist” - Florence Price

PRAYER BELL - WELCOME - ANNOUNCEMENTS

***GATHERING SONG:** ELW 553 Christ, Whose Glory Fills the Skies



1 Christ, whose glo - ry fills the skies, Christ, the true and on - ly light,
2 Dark and cheer-less is the morn un - ac - com - pa - nied by thee;
3 Vis - it then this soul of mine, pierce the gloom of sin and grief;



Sun of righ-teous-ness, a - rise, tri - umph o'er the shades of night;
joy-less is the day's re - turn, till thy mer-cy's beams I see,
fill me, ra - dian - cy di - vine, scat - ter all my un - be - lief;



Day-spring from on high, be near; Day-star, in my heart ap - pear.
till they in - ward light im - part, glad my eyes, and warm my heart.
more and more thy - self dis - play, shin - ing to the per - fect day.

Text: Charles Wesley, 1707–1788

Music: RATISBON, J. G. Werner, *Choralbuch*, 1815

***GREETING- KYRIE- HYMN OF PRAISE:** p. 193-196

***PRAYER OF THE DAY:** Let us pray... **Amen.**

WORD

FIRST READING: Isaiah 58:1-12 -Word of God. Word of life. **Thanks be to God.**

PSALM 112:1-9 - *On its surface, psalm 112 seems to equate wealth and success with one's personal righteousness and God's corresponding favor. A closer reading helps us to see that God's faithfulness is the source and ground of our lives – lives which are then characterized by generosity, mercy, and justice. Our hope and security are not in our worldly success, but in God's trustworthiness and never failing love.*

¹Hallelujah! Happy are they who | fear the LORD
and have great delight in | God's commandments!

²**Their descendants will be mighty | in the land;
the generation of the upright | will be blessed.**

³Wealth and riches will be | in their house,
and their righteousness will | last forever.

⁴**Light shines in the darkness | for the upright;
the righteous are merciful and full | of compassion.**

⁵It is good for them to be gener- | ous in lending
and to manage their af- | fairs with justice.

⁶**For they will nev- | er be shaken;
the righteous will be kept in everlast- | ing remembrance.**

⁷They will not be afraid of any | evil rumors;
their heart is steadfast, trusting | in the LORD.

⁸**Their heart is established and | will not shrink,
until they see their desire up- | on their enemies.**

⁹**They have given freely to the poor, and their righteousness stands | fast forever;
they will hold up their | head with honor.**

SECOND READING: 1 Corinthians 2:1-12-Word of God. Word of life. **Thanks be to God.**

CHILDREN'S MESSAGE

*** GOSPEL ACCLAMATION**



*** GOSPEL:** Matthew 5:13-20

The Holy Gospel according to Matthew. **Glory to you, O Lord.**

The Gospel of the Lord. **Praise to you, O Christ.**

SERMON

***HYMN OF THE DAY:** ELW 712 Lord, Whose Love in Humble Service (see next page)

Lord, Whose Love in Humble Service



1 Lord, whose love in hum-ble ser-vice bore the weight of hu-man need,
2 Still your chil-dren wan-der home-less; still the hun-gry cry for bread;
3 As we wor-ship, grant us vi-sion, till your love's re-veal-ing light
4 Called by wor-ship to your ser-vice, forth in your dear name we go,



who up-on the cross, for-sak-en, worked your mer-cy's per-fect deed:
still the cap-tives long for free-dom; still in grief we mourn our dead.
in its height and depth and great-ness dawns up-on our quick-ened sight,
to the child, the youth, the a-ged, love in liv-ing deeds to show;



we, your ser-vants, bring the wor-ship not of voice a-lone, but heart;
As you, Lord, in deep com-pas-sion healed the sick and freed the soul,
mak-ing known the needs and bur-dens your com-pas-sion bids us bear,
hope and health, good-will and com-fort, coun-sel, aid, and peace we give,



con-se-crat-ing to your pur-pose ev-'ry gift which you im-part.
by your Spir-it send your pow-er to our world to make it whole.
stir-ring us to ar-dent ser-vice, your a-bun-dant life to share.
that your ser-vants, Lord, in free-dom may your mer-cy know and live.

Text: Albert F. Bayly, 1901–1984

Music: BEACH SPRING, *The Sacred Harp*, Philadelphia, 1844

Text © Oxford University Press

Duplication in any form prohibited without permission or valid license from copyright administrator.

***APOSTLE'S CREED:** p.105

I believe in God, the Father almighty, creator of heaven and earth.

I believe in Jesus Christ, God's only Son, our Lord, who was conceived by the Holy Spirit, born of the virgin Mary, suffered under Pontius Pilate, was crucified, died, and was buried; he descended to the dead. On the third day he rose again; he ascended into heaven, he is seated at the right hand of the Father, and he will come to judge the living and the dead.

I believe in the Holy Spirit, the holy catholic church, the communion of saints, the forgiveness of sins, the resurrection of the body, and the life everlasting. Amen.

***PRAYERS OF INTERCESSION:** *Each petition ends: Gracious God, hear our prayer.*

***PEACE:** The peace of Christ be with you always. **And also with you** *We share peace by waving to those worshipping online or through the public access channel and then with those in the sanctuary.*

OFFERTORY MUSIC: “Non Nobis, Domine” (Not unto us, Lord, but to thy name give the glory) - Philip van Wilder

***OFFERING SONG:** ELW 466 In the Singing



1 In the sing-ing, in the si-lence, in the hands ex-pect-ant, o-pen,
2 In the ques-tion, in the an-swer, in the mo-ment of ac-cept-ance,



in the bless-ing, in the break-ing, in your pres-ence at this ta-ble,
in the heart's cry, in the heal-ing, in the cir-cle of your peo-ple,



Je-sus Christ, Je-sus Christ, be the wine of grace;



Je-sus Christ, Je-sus Christ, be the bread of peace.

Text: Shirley Erena Murray, b. 1931

Music: BREAD OF PEACE, Carlton R. Young, b. 1926

Text and music © 1996 Hope Publishing Company, Carol Stream, IL 60188. All rights reserved. Used by permission.

Duplication in any form prohibited without permission or valid license from copyright administrator.

***OFFERTORY PRAYER:** Let us pray...Amen.

MEAL

***GREAT THANKSGIVING-HOLY - LORDS PRAYER:** P. 199-201

HOLY COMMUNION: *All are welcome at Christ's table. Those at home, Christ's body and blood is given for you too.* Ushers will direct you out of your pew, up the aisle near parking lot and to the altar rail where you can hold out your hands to receive gluten and dairy free bread. The plate of cups will then be offered for you to select wine or grape juice. If you prefer a blessing, indicate by placing your hands in front of your heart. If you need an individual, pre-packaged serving of bread and wine, please request that of your server. Place wine/juice cups in the basket by the altar as you return to your pew. **Children and youth, movie chaperones and fellowship servers are invited up first so you can have fellowship before the movie starts in the Gathering Space.**

COMMUNION HYMNS: ELW 715 Christ, Be Our Light, ELW 469 By Your Hand You Feed Your People

Christ, Be Our Light



1 Long - ing for light, we wait in dark - ness. Long - ing for
2 Long - ing for peace, our world is trou - bled. Long - ing for
3 Long - ing for food, man - y are hun - gry. Long - ing for
4 Long - ing for shel - ter, man - y are home - less. Long - ing for
5 Man - y the gifts, man - y the peo - ple, man - y the



truth, we turn to you. Make us your own,
hope, man - y de - spair. Your word a - lone
wa - ter, man - y still thirst. Make us your bread,
warmth, man - y are cold. Make us your build - ing,
hearts that yearn to be - long. Let us be ser - vants



your ho - ly peo - ple, light for the world to see.
has pow'r to save us. Make us your liv - ing voice.
bro - ken for oth - ers, shared un - til all are fed.
shel - ter - ing oth - ers, walls made of liv - ing stone.
to one an - oth - er, signs of your king - dom come.



Refrain
Christ, be our light! Shine in our hearts. Shine through the



dark - ness. Christ, be our light! Shine in your



church gath - ered to - day.

Text: Bernadette Farrell, b. 1957

Music: CHRIST, BE OUR LIGHT, Bernadette Farrell

Text and music © 1993 Bernadette Farrell. Published by OCP Publications, 5536 NE Hassalo, Portland, OR 97213.

All rights reserved. Used by permission.

Duplication in any form prohibited without permission or valid license from copyright administrator.

By Your Hand You Feed Your People



- 1 By your hand you feed your peo - ple, food of an - gels, heav-en's bread.
- 2 In this meal we taste your sweet-ness, bread for hun - ger, wine of peace.
- 3 Send us now with faith and cour - age to the hun - gry, lost, be - reaved.



For these gifts we did not la - bor, by your grace have we been fed:
Ho - ly word and ho - ly wis-dom sat - is - fy our deep-est needs.
In our liv - ing and our dy - ing, we be - come what we re - ceive:



Christ's own bod-y, blessed and bro - ken, cup o'er-flow-ing, life out - poured,



giv-en as a liv-ing to - ken of your world re-deemed, re - stored.

Text: Susan R. Briehl, b. 1952

Music: CAMROSE, Marty Haugen, b. 1950

Text and music © 2002 GIA Publications, Inc. 7404 S. Mason Ave., Chicago, IL 60638. www.giamusic.com
800.442.3358 w All rights reserved. Used by permission.

Duplication in any form prohibited without permission or valid license from copyright administrator.

* TABLE BLESSING - PRAYER AFTER COMMUNION

SENDING

SENDING ANNOUNCEMENTS

*BLESSING

*SENDING SONG: ELW 677 This Little Light of Mine

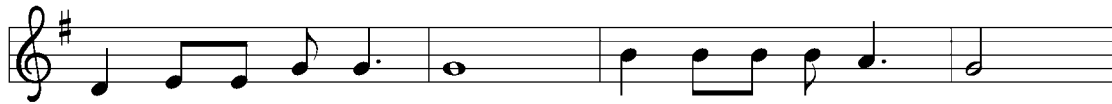
This Little Light of Mine



1 This lit - tle light of mine, I'm goin' - a let it shine;
2 Ev - 'ry - where I go, I'm goin' - a let it shine;
3 Je - sus gave it to me, I'm goin' - a let it shine;



this lit - tle light of mine, I'm goin' - a let it shine;
ev - 'ry - where I go, I'm goin' - a let it shine;
Je - sus gave it to me, I'm goin' - a let it shine;



this lit - tle light of mine, I'm goin' - a let it shine,
ev - 'ry - where I go, I'm goin' - a let it shine,
Je - sus gave it to me, I'm goin' - a let it shine,



let it shine, let it shine, let it shine.
let it shine, let it shine, let it shine.
let it shine, let it shine, let it shine.

Text: African American spiritual

Music: THIS JOY, African American spiritual

***DISMISSAL:** Go in peace. Follow the way of Jesus. **Thanks be to God.**

PRAYER BELL- POSTLUDE: "Rocking Chair" - Florence Price

The postlude sends us out for service in the world. Feel free to use this time in any way that helps to send you out! Copyright © 2023 Augsburg Fortress. All rights reserved. License # SB118886 - Hymns: Copyright © OneLicense A-731311

TODAY'S WORSHIP LEADERSHIP AND HOSPITALITY – USHERS: John Moeller, David Judisch;
READER: Jane Borelli; CANTOR: Melanie Folkerts; ASSISTING MINISTER: Jane Jakoubek;
ORGANIST & PIANIST: Brooke Joyce; PREACHER & PRESIDER: Rev. Amy Zalk Larson

MUSIC NOTES: The prelude and postlude today were composed by Florence Price (1887-1953), who was the first black female composer featured by a major American orchestra (Chicago Symphony in 1933).

ANNUAL MEETING Following worship today at 11:00 am in the Fellowship Hall – there will be a supervised showing of a movie (Prince of Egypt) in the Gathering Space for any kids/youth.

- Special Notes: There will be a vote on a Reparations Royalties for Spirituals proposal and a proposal to form Ministry Team Flocks

INSTALLATION OF THE CONGREGATION COUNCIL AND NEW COMMITTEE MEMBERS will take place next **Sunday, February 12**. We will also offer a blessing to all those continuing their service in elected and appointed roles in the congregation.

GOOD SHEPHERD WILL WELCOME NEW MEMBERS SUNDAY, FEB. 26. If you are interested in membership in the congregation, please contact Pr. Amy or the church office. All guests and those considering membership are invited to a **GOOD SHEPHERD INFORMATION SESSION Sunday, Feb. 12** following worship. You are welcome to learn more about the congregation at this session even if you are not considering membership.

FOOD DRIVE! Luther College Ministries has been challenged by Wartburg College Ministries to a food drive competition. The official challenge is between Luther/Good Shepherd and Wartburg/Redeemer, but donations are welcome from all!

- Collection bins can be found at Good Shepherd and at Luther College Campus Ministries Office from January 29-February 12.
- The Decorah Food Pantry staple items always needed are: pasta, mac & cheese, peanut butter, flour (small bags), cooking oil, sugar (small bags), soup, cereal, butter, dish soap.
- The competition is friendly, and the stakes are low – the losing college pastor has to lead one chapel service wearing the opposing school's gear.

VESTERHEIM VOLUTEER: Enjoy community and lifelong learning by becoming a Vesterheim volunteer! Give as much or as little time as you'd like in tasks that fit your skills. Examples include guiding, administrative duties, or helping with events like school groups, Nordic Fest, and Free Second Saturdays. We have lots of options and will work with your abilities. Everyone welcome. Please contact Chivonne Marlow, Volunteer Coordinator, at 563-382-9681 or cmarlow@vesterheim.org.

GRATITUDE: the Wood family would like to thank everyone for their kind thoughts and prayers during their recent loss.

Opportunity to be part of the SOCIAL JUSTICE TEAM. Are you interested in the intersection of faith and social justice? Would you like to put your faith into action by engaging in social justice work? Good Shepherd has a long history of social justice advocacy, including refugee resettlement, immigration, hunger, LGBTQ+ inclusion, voting rights, racial justice, and climate action. If you'd like to be part of this work, please join us during Fellowship Hour on Sunday, Feb. 19th. Questions? Contact Marion Pruitt-Jefferson @ mpruitt.jefferson58@gmail.com; text or call 563-379-6197.

CONFIRMATION MENTORS DURING LENT During Lenten Soup Suppers, our Confirmands and Kelli will be sharing high and lows, talking about midweek worship, praying for each other, and blessing each other. This is a beautiful time together! You can experience this with these youth as a Confirmation mentor. If you can attend at least three of the suppers and would like to be part of this, please contact Pr. Amy.

MINISTRY SUPPORT for FEBRUARY - APRIL: Each Sunday, the time and talents of Good Shepherd members help to enrich services (and help them run in the first place!) Sign-Ups are found under the "Sign-Up" Tab and in the Gathering Space. We ask members to serve in ways that best fit them as able.

- **Assisting Minister:** Sundays: Reads prayers and serves communion during service. Meets with Presiding Minister at 9:10 am to review service flow.
- **Reader:** Reads scriptures during the service. Meets with Presiding Minister at 9:10 am to review service flow.
- **Cantor:** Sunday: Leads congregation in singing the Kyrie, Psalm, and acclamations during the service. Meets with Presiding Minister at 9:10 am to review service flow.
- **Ushers:** Arrive at 9:10 am to greet worshippers. Passes and presents offering plates. Guides flow to Communion. Counts offering and drops at bank deposit box following service. 2-hour commitment
- **Fellowship:** Preparation and service set up of coffee and treats for the Fellowship Hour following the worship service. Clean up of Fellowship Hall and Kitchen after. 1.5-hour commitment

ERICA OFFICE HOURS THIS WEEK: Monday: 8:00 – 10:00 am, Wednesday-Thursday: 10:00-5:00 pm and available via voicemail and email on other days. Thank you.

PRAYER LIST:

Good Shepherd Family: Caton Family, James Barth, Marion Hanson, Barbara Berg and Family, Stephanie Hoff, Donna Bahr, Ed Hover, Harland Nelson, Jerrine Jacobsen, Glenn Nelson, Janet Gall, Lowell Erdman, Jutta Anderson, all residents and staff at Aase Haugen, Eastern Star, Wellington Place, Mosaic Homes, and Bartels Lutheran Retirement Community, and those preparing for public ministry: Joseph Doegen and Kathryn Thompson

Relatives and Friends: Angie Reynolds (friend of Ruth Bruce), Frank Barth (James Barth's brother), Sylvia Clisham (member of the Prayer Shawl Ministry), Parents of Dan Raney, Suzette and Richard Caton (Brian's parents), Diane Borness (Sister of Marilyn Anderson), The family of Luke Hackman (Friends of the Bureshs), Carol Moe (Naomi Craft's sister), Ann Hovde Nelson (Daughter-in-law of Glenn Nelson and Jane Borelli), Sarah Jane, Tim and Sue Broderick (friends of Jerry and Ruth Bruce), Nathaniel Judisch (son of Dave and Gail), Robin Darland (Friend of Erik Berg), Dennis Martin (brother-in-law of the Slinds) Karen & Randy Erion (friends of Charilyn & Ed Hover), Nathan Scheuerelein (grandson of Bonnie Flora), Lynzee Makowski (friend of Laurie Biedermann), John Monson (Martha Monson Lowe's father), Barb Reckling (Martha Monson Lowe's cousin), Erik Wangsness (nephew of Sharon Drew), Todd Hove (son of Gloria Hove), Aaron Buzza (son of Jim and Kathy), Marilyn Walli (Cousin of Marv Slind), Marian Brynsaas (sister of LaVerne Ramsey), Mary Beth & Bayo Oyebade and the Mashiah Foundation in Jos, Nigeria, and our Companion Synod in Hungary

GOOD SHEPHERD LUTHERAN CHURCH

563-382-3963 office@goodshepherddecorah.org goodshepherddecorah.org

Pastor Amy: Cell 563-419-0140, pastoramy@goodshepherddecorah.org

WELCOME GUESTS. THERE IS A PLACE FOR YOU HERE.

ALL ARE WELCOME TO SHARE IN HOLY COMMUNION. It is Christ's table and Christ is the host. Instructions are included in the communion section of the Order of Worship.

THE PRESENCE, ENERGY, AND NOISE OF CHILDREN ARE MOST WELCOME HERE. The sound of a child in worship is the sound of a new Christian being formed. This congregation is glad to share in this work. We welcome and encourage kids to move and play. A nursery with toys and activity bags are available. Mothers are welcome to nurse anywhere that works for you and your child. An Infant Feeding Chair is available in the music office (hallway outside of sanctuary) for more privacy if desired.

RACIAL JUSTICE STATEMENT: This Statement was approved at the annual meeting of the congregation on February 6th, 2022. It was developed through the work of the Antiracism Team which held listening sessions with the congregation. A portion of the Statement is printed here each week: find the full statement at goodshepherddecorah.org/racial-Justice-Statement or by scanning the code:



***We confess** by what we have done and left undone that we have perpetuated systems of racial injustice and violence. (Micah 6:8)*

***We acknowledge** that Good Shepherd Lutheran Church is built on land that was home to the Ioway, Otoe-Missouria, Eastern Dakota, Sac, Fox, Winnebago and Ho-Chunk tribes. In 1848, over two thousand Winnebago were forcibly displaced from here by the U.S. military to make way for European-American settlers. (2016 Assembly Action CA16.02.04 Repudiation of the Doctrine of Discovery)*

***We lament** that the white Church in the United States, through its dominant place in our country's culture and history, has actively constructed, justified, and sustained systems of racial injustice and violence. The Evangelical Lutheran Church in America has marginalized Lutheran Black, Indigenous, and People of Color leaders and communities and perpetuated a patriarchal, monocultural and racially segregated status quo. (From Declaration of the ELCA to Peoples of African Descent issued by ELCA Church Council, June 27, 2019)*