

GOOD SHEPHERD LUTHERAN CHURCH

A Congregation of the Evangelical Lutheran Church in America

A Reconciling in Christ Congregation

An AMMPARO Welcoming Congregation

... We Are God's People and the Sheep of God's Pasture ...

Psalm 100:3

Pastor Amy Zalk Larson (on Good Shepherd youth trip)

Dr. Rev. Rolf Svanoe, Preacher and Presider

Brooke Joyce, Music Director

Kelli Gapinski, Director of Children, Youth and Family Ministry

Erica Yaneff, Ministry Support Coordinator



July 24th, 2022

9:30 a.m.

ORDER OF WORSHIP

Evangelical Lutheran Worship-**ELW (red book)**, All Creation Sings-**ACS (purple book)**, Behold, I
Make All Things New Liturgy (**blue booklet**)

Page numbers (p.) In front of blue booklet and hymn numbers (#) in back of ELW
congregational responses in **bold**; rise in body or spirit when indicated by *

GATHERING

GATHERING MUSIC: "To a Wild Rose" - Edward MacDowell

PRAYER BELL - WELCOME- ANNOUNCEMENTS

***GATHERING SONG:** ELW 852 Golden Breaks the Dawn

Golden Breaks the Dawn

Qing zao qilai kan



Qing zao qi - lai kan, hong ri chu tong - fang,
1 Gold - en breaks the dawn, comes the east - ern sun;
2 Ho - ly, liv - ing God, keep me safe to - day;
3 Give me dai - ly bread, while I do my part;



xiong - zhuang xiang yong - shi, mei - hao xiang xin - lang;
like a rid - er strong, set the course to run.
though I wea - ry plod, make me kind, I pray.
bright skies o - ver - head, glad - ness in my heart.



tian gao fei - niao guo, di kuo ye - hua xiang,
Birds a - bove me fly, flow - ers bloom be - low;
Let me guide our youth, hon - or weak and old;
Sim - ple wants pro - vide, e - vil let me shun;



zhao wo qin gong - zuo, Tian - fu you en - guang.
through the earth and sky God's great mer - cies flow.
let me serve with truth, and God's love un - fold.
Je - sus at my side, till the day is done.

Text: Tzu-chen Chao; para. Frank W. Price, 1885-1974

Music: LE PING, Te-ngai Hu

Text and music © 1977 Chinese Christian Literature Council Ltd., Hong Kong, admin. Augsburg Fortress.

Duplication in any form prohibited without permission or valid license from copyright administrator.

***GREETING** The God who created space and time, journeyed with us in human form, and travels with us still, be with you all. **And also with you.**

KYRIE-HYMN OF PRAISE: P. 2-5

***PRAYER OF THE DAY... Amen.**

TRAVEL TESTIMONY: Carol Hasvold

WORD

PILGRIMAGE PSALM - Psalm 131

ST. PAUL'S TRAVEL TIP: Ephesians 3:1-12

... God's word is a lamp to our feet **and a light to our path.**

***TRAVELING MUSIC: ELW 808 Lord Jesus, You Shall Be My Song – vs. 1**

Lord Jesus, you shall be my song as I journey;

I'll tell ev'rybody about you wherever I go:

you alone are our life and our peace and our love.

Lord Jesus, you shall be my song as I journey.

***THE GOSPEL OF THE HOLY SPIRIT: Acts 13:1-5**

...God's word is a lamp to our feet **and a light to our path.**

SERMON: "God's Mission for the Life of the World"

***HYMN OF THE DAY:** ELW 576 We All Are One in Mission (See next page)

We All Are One in Mission



1 We all are one in mis - sion; we all are one in call,
2 We all are called for ser - vice, to wit-ness in God's name.
3 Now let us be u - nit - ed, and let our song be heard.



our var - ied gifts u - nit - ed by Christ, the Lord of all.
Our min - is - tries are dif - f'rent; our pur - pose is the same:
Now let us be a ves - sel for God's re - deem - ing Word.



A sin - gle great com - mis - sion com - pels us from a - bove
to touch the lives of oth - ers with God's sur - pris - ing grace,
We all are one in mis - sion; we all are one in call,



to plan and work to - geth - er that all may know Christ's love.
so ev - 'ry folk and na - tion may feel God's warm em - brace.
our var - ied gifts u - nit - ed by Christ, the Lord of all.

Text: Rusty Edwards, b. 1955

Music: KUORTANE, Finnish folk tune

Text © 1986 Hope Publishing Company, Carol Stream, IL 60188. All rights reserved. Used by permission.

Duplication in any form prohibited without permission or valid license from copyright administrator.

***CREED Good Shepherd's Journey / Racial Justice Statement**

We proclaim that God has created the diversity of humankind in God's image and we are all equal and beloved children of God. Racism and white supremacy are evils that estrange us from one another, from God, and from the fullness of our humanity. We are in need of liberation from the sins of racism and white supremacy.

We confess by what we have done and left undone that we have perpetuated systems of racial injustice and violence. We trust in the new life made possible through Christ's resurrection and we are hopeful that the Church is an ideal place to engage in the lifelong and transformative work of racial justice. Fostering antiracist ideas and actions is one way that we can follow Jesus' example of love for our neighbor. When we fail, we will rely on God's grace, that God might work in and through our broken humanity and that we might be sustained to learn from our mistakes and continue to show up for the work of antiracism.

We commit to listen, learn, and act with courage, kindness, respect, and humility as we practice antiracism both individually and as a congregation.

We publicly declare that we will actively pursue racial justice in all aspects of our congregational life and make changes to adopt antiracist policies and practices around worship, education, advocacy, stewardship, governance, and through our community partnerships and relationships.

***PRAYERS OF INTERCESSION:** God, in your mercy, **hear our prayer.**

***PEACE:** The peace of Christ be with you always. **And also with you.**
We share peace with those at home by waving at the camera.

MEAL

OFFERTORY MUSIC: "Come, Sing Unto the Lord" - Joseph M. Martin

***OFFERTORY SONG:** Create in me a clean heart ... P. 8

***OFFERTORY PRAYER... Amen**

***GREAT THANKSGIVING P. 10**

***HOLY, HOLY, HOLY P. 11**

***WORDS OF INSTITUTION-THANKSGIVING AT THE TABLE**

***LORD'S PRAYER P. 11 Our Father, who art in heaven...**

HOLY COMMUNION: *All are welcome at Christ's table. Ushers will direct you out of your pew, up the aisle near parking lot and to the altar rail where you can hold out your hands to receive the bread that is gluten free and dairy free. You will be offered a tray of red wine and yellow grape juice cups. Empty cups should be placed in the basket as you leave the altar. If you prefer a blessing, indicate that by placing your hands over your heart. You can also request a prepackaged individual serving of communion and partake of it at your pew.*

COMMUNION MUSIC: P. 12 Lamb of God; ELW 742 What a Friend We Have in Jesus



- 1 What a friend we have in Je - sus, all our sins and griefs to bear!
- 2 Have we tri - als and temp - ta - tions? Is there trou - ble an - y - where?
- 3 Are we weak and heav - y - lad - en, cum - bered with a load of care?



What a priv - i - lege to car - ry ev - 'ry - thing to God in prayer!
We should nev - er be dis - cour - aged—take it to the Lord in prayer.
Pre - cious Sav - ior, still our ref - uge—take it to the Lord in prayer.



Oh, what peace we of - ten for - feit; oh, what need - less pain we bear—
Can we find a friend so faith - ful who will all our sor - row share?
Do your friends de - spise, for - sake you? Take it to the Lord in prayer.



all be - cause we do not car - ry ev - 'ry - thing to God in prayer!
Je - sus knows our ev - 'ry weak - ness—take it to the Lord in prayer.
In his arms he'll take and shield you; you will find a so - lace there.

Text: Joseph Scriven, 1820–1886

Music: CONVERSE, Charles C. Converse, 1832–1918

*TABLE BLESSING

*POST COMMUNION PRAYER

SENDING

SENDING ANNOUNCEMENTS

BLESSING

*SENDING SONG: ACS 1000 God's Work, Our Hands (See next page)

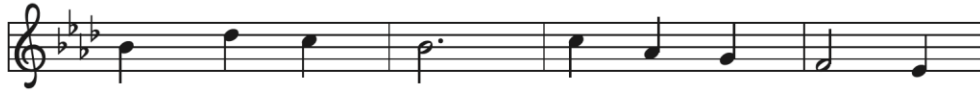
God's Work, Our Hands



1 God's work, our hands: work - ing to - geth - er,
2 God's work, our feet: trav - 'ling to - geth - er,
3 God's work, our voice: sing - ing to - geth - er,
4 God is at work in and a - round us:



build - ing a fu - ture, re - pair - ing the world,
fol - low - ing Je - sus to plac - es un - known,
prais - ing, pro - claim - ing to all who will hear,
seed - lings are sprout - ing and bread's on the rise!



rais - ing up homes, plant - ing new gar - dens,
walk - ing as friends, march - ing for free - dom,
pray - ing for peace, shout - ing for jus - tice,
Washed and set free, hum - bled and hon - ored,



feed - ing the hun - gry and shelt - 'ring the cold.
run - ning the race with God's fu - ture the goal.
claim - ing God's love for the lost and the least.
gift - ed by grace, we re - spond in God's love.



Bless, God, our hands as we work in your name,
Bless, God, our feet as we fol - low your way,
Bless, God, our voice as we speak in your name,
Bless, God, our lives as we an - swer your call,



shar - ing the good news of your gos - pel.
shar - ing the good news of your gos - pel.
shar - ing the good news of your gos - pel.
shar - ing the good news of your gos - pel.

Text: Wayne L. Wold, b. 1954

Music: EARTH AND ALL STARS, David N. Johnson, 1922–1987

Text © 2019 Evangelical Lutheran Church in America, admin. Augsburg Fortress

Music © 1968 Augsburg Publishing House, admin. Augsburg Fortress

Duplication in any form prohibited without securing permission from copyright administrator or reporting usage under valid license.

***DISMISSAL:** Go in peace. Christ goes with you. **Thanks be to God.**

PRAYER BELL – POSTLUDE: “Magnetic Rag” - Scott Joplin

The postlude sends us out for service in the world. Feel free to use this time in any way that helps to send you out!

Copyright © 2022 Augsburg Fortress. All rights reserved. License # SB118886 - Hymns:
Copyright © OneLicense A-731311 - Lord Jesus, You Shall Be my Song copyrights Les Petites
Soeurs de Jesus, 1970 Stephen Somerville

TODAY'S WORSHIP LEADERSHIP AND HOSPITALITY – USHERS: Jeri Laursen; ASSISTING MINISTER: Reg Laursen; READER: Jane Jakoubek; CANTOR: Reg Laursen; FELLOWSHIP: Kathy Buzza, Marie Freerking, Gail Judisch; ORGANIST & PIANIST: Brooke Joyce; PREACHER & PRESIDER: Dr. Rev. Rolf Svanoë

VOLUNTEERS NEEDED: 2 Ushers are needed each Sunday to help the Sunday service happen. Duties involve: arrive at 9:10 am to greet worshippers. Pass and present offering plates. Guide flow to Communion. Count offering and drops at bank deposit box following service. ~2-hour commitment including worship.

- 1 reader, 1 assisting minister, and 3 fellowship servers are also requested each week. We are also in need of more volunteers to help with audio/visual on Sundays. Contact the Church Office with questions.

GARDEN PRODUCE AVAILABLE ON SUNDAYS: An assortment of garden vegetables and flowers will be available from the Good Shepherd garden throughout the summer as produce matures. Vegetables and flowers will be on a table in the Fellowship Hall entryway, with donations going to the Decorah Community Food Pantry. A giant thank you to John Moeller and other garden volunteers!

GoFundMe for BOB BRUCE: Residents of Hutchinson, Minnesota have established a GoFundMe account for Bob Bruce, the son Good Shepherd members Ruth and Jerry Bruce. Bob is currently undergoing 12 weeks of chemotherapy after being diagnosed with muscle invasive bladder cancer. Following the chemo treatment, Bob's bladder will be removed and a new one will be constructed from part of his intestines. If you'd like to assist, go to [GoFundMe.com](https://www.gofundme.com/buy-bob-a-bladder) and search "Buy Bob A Bladder". This fundraiser is organized by Cortney Christie.

FINAL DAY OF KRUMKAKE BAKING: If you have not already signed up, just come to the Fellowship Hall Tomorrow, July 25, from 9:00 - 11:00 a.m. for the FINAL Krumkake baking: Gluten-Free Baking Day. Help get Good Shepherd ready for Nordic Fest!

NORDIC FEST THIS WEEK: A few people are still needed to help at the Fest on Friday and Saturday afternoons and Saturday evening, either demonstrating in the Bank of the West lobby or selling in the booth. Sign-up sheets are in the Gathering Space OR sign up on Good Shepherd's website at the Krumkake link under the SIGN-UPS Tab.

- You can also sign up to serve as Chairperson, a new position this year. This volunteer will help bag Krumkake baked in the bank lobby and deliver it to the booth and



see that previously baked Krumkake is brought to the booth.

- **Nordic Fest 2022 is next Thursday-Saturday, July 28-30:** stop by the Krumkake booth, or in the Bank of the West Demonstration area and support Good Shepherd!

SUNDAY, JULY 24 - WEDNESDAY, JULY 27 - NE IOWA SYNOD 2022 BOUNDLESS YOUTH GATHERING: 6 Good Shepherd Youth, along with **Kelli Gapinski**, (Good Shepherd's Children, Youth, and Family Director) and **Pastor Amy** will travel with an additional 60 Decorah area youth to the Twin Cities for the Synod's **Boundless Youth Gathering**. We send our prayers and support for their trip!

- Approximately 300 youth from the Northeastern Iowa Synod will attend the 3 day gathering, which replaces the 2022 ELCA National Youth Gathering in the Twin Cities that was canceled earlier due to the pandemic.
- Programming and activities include games, speakers, musical entertainment, and conversations to help everyone grow in faith, as well as an opportunity to explore Minneapolis and a Service Day.
- **Special note:** Good Shepherd's Altar Guild is providing our gluten-free Communion Bread to serve all attending the Youth Gathering. **Jeri Laursen** is baking 20 loaves; **Kelli Gapinski** will take them to the Gathering.
- Good Shepherd Youth will lead the Sunday, July 31, worship service.

KITCHEN REMODELING 99% COMPLETE Jim Fritz reports: Basically the kitchen renovation is done. While there are a few tweaks yet to be completed, things are 99% complete. I will fire up the dishwasher this week and it **should** be functioning on Sunday.

COMPASSION CAMP VACATION BIBLE SCHOOL: All children entering Kindergarten - 6th grade are invited to **Compassion Camp** at Good Shepherd, **Tuesday-Thursday, August 2-4, from 5:00 - 7:30 p.m.** The cost is \$10 per child, with dinner provided. Compassion Camp activities include music, games, small groups, and crafts. Contact **Kelli Gapinski**: kelli@goodshepherddecorah.org or the Church Office for more information!

CARBON NEUTRAL INITIATIVE MISSION GREEN PROJECT UPDATE *Mission Green* released a new project update to all on the the Good Shepherd family email list on **Monday, July 18**, discussing the recent evaluation of both the Education and Office roof areas to allow the installation of all 52 solar roof panels. For complete information, check for the message in your email inbox or go to missiongreen.llc/news-and-info/

CHURCH HOURS IN OFFICE THIS WEEK: Monday 8:00 am–9:00 am in office, Wednesday–Thursday 8:30 am–3:30 pm, Friday 8:00 am–9:00am. All other days I am working from home and accessible by voicemail or email. Pastoral care is covered by Rev. Rolf Svanoë on Sunday–Wednesday while Pr. Amy is away on the Youth Gathering Trip. Contact the Church office to be connected with Pastoral care as needed.

PRAYER LIST:

Good Shepherd Family: Kerry & Kirk Johnson (at the loss of Kerry's mother, Joanne); Family of Richard Dinger, Family of Rev. R. David Berg, Family of Linda Lambert, Jerrine Jacobsen, Glenn Nelson, Barbara Berg, Verne Koenig, Melanie Folkerts, Lowell Erdman, Ed Hover, Jutta Anderson, all residents and staff at Aase Haugen, Eastern Star, Wellington Place, Mosaic Homes, and Bartels Lutheran Retirement Community, and those preparing for public ministry: Menzi Nkambule, Joseph Tiegen, and Kathryn Thompson

Relatives and Friends: Tim and Sue Broderick (friends of Jerry and Ruth Bruce), Bob Bruce (Son of Jerry & Ruth Bruce), Nathaniel Judisch (son of Dave and Gail), Robin Darland (Friend of Erik Berg), Sid Simpson (Brother in law of Marty Steele), Dennis Martin (brother-in-law of the Slinds), Melissa, Samuel and Declan Isenhardt (daughter and newborn grandchildren of Pam Kranzler), Richard Buresh (brother of Tom Buresh), Kristie & Hana Nelson (family of Knute Nelson), Karen & Randy Erion (friends of Charilyn & Ed Hover), Linda Morgan (sister of Jane Borelli), Nathan Scheuerelein (grandson of Bonnie Flora), Lynzee Makowski (friend of Laurie Biedermann), John Monson (Martha Monson Lowe's father), Jane Hood (Martha Monson Lowe's cousin), Martha Johnson (daughter of Mickey Slind), Erik Wangsness (nephew of Sharon Drew), Todd Hove (son of Gloria Hove), Aaron Buzza (son of Jim and Kathy), Marilyn Walli (Cousin of Marv Slind), Donna Struve (mother of Jonathon Struve), Marian Brynsaas (sister of LaVerne Ramsey), Mary Beth & Bayo Oyebade and the Mashiah Foundation in Jos, Nigeria, and our Companion Synod in Hungary.

ALL ARE WELCOME AT GOOD SHEPHERD LUTHERAN CHURCH. God makes no exceptions. In the spirit of Jesus Christ, we offer trust and respect to all, including those who may experience alienation, distrust, or rejection. We rely on the healing, unconditional love of God to shape our community in the name of the Good Shepherd. In keeping with our welcome, Good Shepherd is a *Reconciling in Christ* congregation, affirming our welcome to gay, lesbian, bisexual, transgender and queer identifying persons to participate fully in the life of our congregation. We are an *AMMPARO Welcoming Congregation* - Accompanying Migrant Minors with Protection, Advocacy, Representation and Opportunities.

Please sign the red hospitality books for the sake of welcome and as a record of worship attendance. *Guests, if you leave your email in the hospitality books, Our office will contact you if there is news of a positive case of COVID in worship.*

WELCOME GUESTS. THERE IS A PLACE FOR YOU HERE. All are welcome at Fellowship Hour today after worship! Treats/beverages are in the Fellowship Hall (far end of the Church Building).

ALL ARE WELCOME TO SHARE IN HOLY COMMUNION. It is Christ's table and Christ is the host. Instructions are included in the communion section of the Order of Worship.

THE PRESENCE, ENERGY, AND NOISE OF CHILDREN ARE MOST WELCOME HERE. The sound of a child in worship is the sound of a new Christian being formed. This congregation is glad to share in this work. We welcome and encourage kids to move and play. A nursery with toys and activity bags are available. Mothers are welcome to nurse anywhere that works for you and your child. An Infant Feeding Chair is available in the music office (hallway outside of sanctuary) for more privacy if desired.

GOOD SHEPHERD LUTHERAN CHURCH

701 Iowa Avenue, Decorah, IA 52101 563-382-3963 office@goodshepherddecorah.org
goodshepherddecorah.org
Pastor Amy: Cell 563-419-0140, pastoramy@goodshepherddecorah.org