

GOOD SHEPHERD LUTHERAN CHURCH

A Congregation of the Evangelical Lutheran Church in America

A Reconciling in Christ Congregation

An AMMPARO Welcoming Congregation

... We Are God's People and the Sheep of God's Pasture ...

Psalm 100:3

Pastor Amy Zalk Larson (on sabbatical)

Rev. Dr. Rolf Svanoe, Preacher and Presider

Brooke Joyce, Music Director

Kelli Gapinski, Director of Children, Youth and Family Ministry

Erica Yaneff, Ministry Support Coordinator



Day of Pentecost

June 5, 2022

9:30 a.m.

ORDER OF WORSHIP

Evangelical Lutheran Worship-**ELW (red book)**, All Creation Sings-**ACS (purple book)**, Behold, I
Make All Things New Liturgy (**blue booklet**)

Page numbers (p.) In front of blue booklet and hymn numbers (#) in back of ELW
congregational responses in **bold**; rise in body or spirit when indicated by *

GATHERING

GATHERING MUSIC: Viola solos, performed by Keegan Joyce

PRAYER BELL - WELCOME- ANNOUNCEMENTS

***GATHERING SONG:** ACS 991 Go to the World

1 Go to the world! Go in - to all the earth.
2 Go to the world! Go in - to ev - 'ry place.
3 Go to the world! Go strug - gle, bless, and pray;
4 "Go to the world! Go as the ones I send,

Go preach the cross where Christ re - news life's worth,
Go live the word of God's re - deem - ing grace.
the nights of tears give way to joy - ous day.
for I am with you till the age shall end,

bap - tiz - ing as the sign of our re - birth.
Go seek God's pres - ence in each time and space.
As ser - vant church, you fol - low Christ's own way.
when all the hosts of glo - ry cry, A - men!"

Al - le - lu - ia. Al - le - lu - ia.

Text: Sylvia G. Dunstan, 1955–1993

Music: SINE NOMINE, Ralph Vaughan Williams, 1872–1958

Text © 1991 GIA Publications, Inc., giamusic.com. All rights reserved.

Music © Oxford University Press. All rights reserved.

Duplication in any form prohibited without securing permission from copyright administrator or reporting usage under valid license.

***GREETING** The God who created space and time, journeyed with us in human form, and travels with us still, be with you all. **And also with you.**

KYRIE-HYMN OF PRAISE: P. 2-5

***PRAYER OF THE DAY...** Amen.

TRAVEL TESTIMONY: Jane Kemp

WORD

PILGRIMAGE PSALM - Psalm 122

ST. PAUL'S TRAVEL TIP: 1 Corinthians 13:1-13

... God's word is a lamp to our feet **and a light to our path.**

*TRAVELING MUSIC: ELW 808 Lord Jesus, You Shall Be My Song – vs. 2



1 *Jé - sus, je vou - drais te chan - ter sur ma rou - te;*
1 Lord Je - sus, you shall be my song as I jour - ney;
2 Lord Je - sus, I'll praise you as long as I jour - ney.
3 As long as I live, Je - sus, make me your ser - vant,
4 I fear in the dark and the doubt of my jour - ney;



Jé - sus, je vou - drais t'an-non-cer à mes voi - sins par - tout,
I'll tell ev - 'ry - bod - y a - bout you wher - ev - er I go:
May all of my joy be a faith - ful re - flec - tion of you.
to car - ry your cross and to share all your bur - dens and tears.
but cour - age will come with the sound of your steps by my side.



car toi seul es la vie et la paix et l'a - mour:
you a - lone are our life and our peace and our love.
May the earth and the sea and the sky join my song.
For you saved me by giv - ing your bod - y and blood.
And with all of the fam - 'ly you saved by your love,



Jé - sus, je vou - drais te chan - ter sur ma rou - te.
Lord Je - sus, you shall be my song as I jour - ney.
Lord Je - sus, I'll praise you as long as I jour - ney.
As long as I live, Je - sus, make me your ser - vant.
we'll sing to your dawn at the end of our jour - ney.


*THE GOSPEL OF THE HOLY SPIRIT: Acts 2:1-21

...God's word is a lamp to our feet **and a light to our path.**

SERMON: "Travel As A Spiritual Act"

*HYMN OF THE DAY: ELW 396 Spirit of Gentleness

Refrain



Spir - it, Spir - it of gen - tle - ness, blow through the wil - der - ness
call - ing and free; Spir - it, Spir - it of rest - less - ness,
stir me from plac - id - ness, wind, wind on the sea.

1 You moved on the wa - ters, you called to the deep,
2 You swept through the des - ert, you stung with the sand,
3 You sang in a sta - ble, you cried from a hill,
4 You call from to - mor - row, you break an - cient schemes.

then you coaxed up the moun - tains from the val - leys of sleep;
and you goad - ed your peo - ple with a law and a land;
then you whis - pered in si - lence when the whole world was still;
From the bond - age of sor - row all the cap - tives dream dreams;

and o - ver the e - ons you called to each thing:
and when they were blind - ed with i - dols and lies,
and down in the cit - y you called once a - gain,
our wom - en see vi - sions, our men clear their eyes.

Refrain

"A - wake from your slum - bers and rise on your wings."
then you spoke through your proph - ets to o - pen their eyes.
when you blew through your peo - ple on the rush of the wind.
With . . . bold new de - ci - sions your peo - ple a - rise.

Text: James K. Manley, b. 1940

Music: SPIRIT, James K. Manley

Text and music © 1978 James K. Manley, admin. Augsburg Fortress.

Duplication in any form prohibited without permission or valid license from copyright administrator.

* GOOD SHEPHERD RACIAL JUSTICE STATEMENT

We proclaim that God has created the diversity of humankind in God's image and we are all equal and beloved children of God. Racism and white supremacy are evils that estrange us from one another, from God, and from the fullness of our humanity. (*Genesis 1:27a*)

We are in need of liberation from the sins of racism and white supremacy. (*Romans 3:23*)

We confess by what we have done and left undone that we have perpetuated systems of racial injustice and violence. (*Micah 6:8*)

We acknowledge that Good Shepherd Lutheran Church is built on land that was home to the Ioway, Otoe-Missouria, Eastern Dakota, Sac, Fox, Winnebago and Ho-Chunk tribes. In 1848, over two thousand Winnebago were forcibly displaced from here by the U.S. military to make way for European-American settlers. (2016 Assembly Action CA16.02.04 *Repudiation of the Doctrine of Discovery*)

We lament that the white Church in the United States, through its dominant place in our country's culture and history, has actively constructed, justified, and sustained systems of racial injustice and violence. The Evangelical Lutheran Church in America has marginalized Lutheran Black, Indigenous, and People of Color leaders and communities and perpetuated a patriarchal, monocultural and racially segregated status quo. (*From Declaration of the ELCA to Peoples of African Descent issued by ELCA Church Council, June 27, 2019*)

We trust in the new life made possible through Christ's resurrection and we are hopeful that the Church is an ideal place to engage in the lifelong and transformative work of racial justice. Fostering antiracist ideas and actions is one way that we can follow Jesus' example of love for our neighbor. When we fail, we will rely on God's grace, that God might work in and through our

broken humanity and that we might be sustained to learn from our mistakes and continue to show up for the work of antiracism. (2 *Corinthians 5:17-18*)

We commit to listen, learn, and act with courage, kindness, respect, and humility as we practice antiracism both individually and as a congregation. (*Galatians 5:22*)

We publicly declare that we will actively pursue racial justice in all aspects of our congregational life and make changes to adopt antiracist policies and practices around worship, education, advocacy, stewardship, governance, and through our community partnerships and relationships. (*Ephesians 2: 14-15, Isaiah 56: 6*)

Grounding Scriptures¹ and ELCA Statements

We proclaim... "God created humankind in God's image, in the image of God, God created them," (*Genesis 1:27a*)

We are in need... "since all have sinned and fall short of the glory of God," (*Romans 3:23*)

We confess... "He has told you, O mortal, what is good; and what does the Lord require of you but to do justice, and to love kindness, and to walk humbly with your God?" (*Micah 6:8*)

We acknowledge... our ELCA 2016 churchwide assembly, voted to "repudiate explicitly and clearly the European-derived doctrine of discovery as an example of the 'improper mixing of the power of the church and the power of the sword' (Augsburg Confession Article XXVIII), and acknowledge and repent from this church's complicity in the evils of colonialism in the Americas, which continue to harm tribal governments and individual tribal Members." (2016 Assembly Action CA16.02.04 *Repudiation of the Doctrine of Discovery*)

We lament... The ELCA Church Council, In 2019, issued a declaration to Peoples of African Descent which recognizes that "Institutional racism currently exists in the ELCA through discriminatory treatment within the call process; inequitable compensation of clergy of color; racial segregation; divestment from black communities and congregations; systemic policies and organizational practices; and failure to fully include the gifts of leadership and worship styles of people of African descent." (*From Declaration of the ELCA to Peoples of African Descent issued by ELCA Church Council, June 27, 2019*)

We trust... "So If anyone is in Christ, there is a new creation: everything old has passed away; see, everything has become new! All this is from God, who reconciled us to himself through Christ, and has given us the ministry of reconciliation." (2 Corinthians 5:17-18)

We commit... "the fruit of the Spirit is love, joy, peace, patience, kindness, generosity, faithfulness, gentleness, and self-control" (Galatians 5:22)

We publicly declare... "For [Christ] is our peace; in his flesh he has made both groups into one and has broken down the dividing wall, that is, the hostility between us...so that he might create in himself one new humanity in place of the two, thus making peace," (Ephesians 2: 14-15)

"Is not this the fast that I choose: to loose the bonds of injustice, to undo the thongs of the yoke, to let the oppressed go free, and to break every yoke?" (Isaiah 56: 6)

***PRAYERS OF INTERCESSION:** God, in your mercy, **hear our prayer.**

***PEACE:** The peace of Christ be with you always. **And also with you.**

We share peace with those at home by waving at the camera.

MEAL

OFFERTORY

***OFFERTORY SONG:** Create in me a clean heart ... P. 8

***OFFERTORY PRAYER... Amen**

***GREAT THANKSGIVING** P. 10

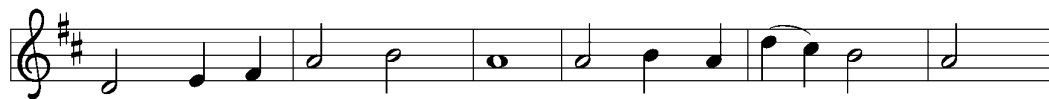
***HOLY, HOLY, HOLY** P. 11

***WORDS OF INSTITUTION-THANKSGIVING AT THE TABLE**

***LORD'S PRAYER** P. 11 **Our Father, who art in heaven...**

HOLY COMMUNION: *All are welcome at Christ's table. Ushers will direct you out of your pew, up the aisle near parking lot and to the altar rail where you can hold out your hands to receive the bread that is gluten free and dairy free. You will be offered a tray of red wine and yellow grape juice cups. Empty cups should be placed in the basket as you leave the altar. If you prefer a blessing, indicate that by placing your hands over your heart. You can also request a prepackaged individual serving of communion and partake of it at your pew.*

COMMUNION MUSIC: P. 12 Lamb of God; ELW 804 Come Down, O Love Divine



1 Come down, O Love di - vine; seek thou this soul of mine
2 Oh, let it free - ly burn, till world - ly pas - sions turn
3 Let ho - ly char - i - ty mine out - ward ves - ture be,
4 And so the yearn - ing strong, with which the soul will long,



and vis - it it with thine own ar - dor glow - ing;
to dust and ash - es in its heat con - sum - ing;
and low - li - ness be - come mine in - ner cloth - ing—
shall far out - pass the pow'r of hu - man tell - ing;



O Com - fort - er, draw near; with - in my heart ap - pear
and let thy glo - rious light shine ev - er on my sight,
true low - li - ness of heart, which takes the hum - bler part,
no soul can guess Love's grace till it be - come the place



and kin - dle it, thy ho - ly flame be - stow - ing.
and clothe me round, the while my path il - lum - ing.
and o'er its own short - com - ings weeps with loath - ing.
where - in the Ho - ly Spir - it makes a dwell - ing.

Text: Bianco da Siena, d. 1434; tr. Richard F. Littledale, 1833–1890

Music: DOWN AMPNEY, Ralph Vaughan Williams, 1872–1958

Music from *The English Hymnal*, outside the USA © Oxford University Press 1906. All rights reserved.

Duplication in any form prohibited without permission or valid license from copyright administrator.

***TABLE BLESSING**

***POST COMMUNION PRAYER**

SENDING

***SENDING SONG: ELW 711 O Day of Peace**



1 O day of peace that dim-ly shines through all our hopes and prayers and dreams,
2 Then shall the wolf dwell with the lamb, nor shall the fierce de-vour the small;



guide us to jus-tice, truth, and love, de-liv-ered from our self-ish schemes.
as beasts and cat-tle calm-ly graze, a lit-tle child shall lead them all.



May swords of hate fall from our hands, our hearts from en-vy find re-lease,
Then en-e-mies shall learn to love, all crea-tures find their true ac-cord;



till by God's grace our war-ring world shall see Christ's prom-ised reign of peace.
the hope of peace shall be ful-filled, for all the earth shall know the Lord.

Text: Carl P. Daw Jr., b. 1944

Music: JERUSALEM, C. Hubert H. Parry, 1848–1918

Text © 1982 Hope Publishing Company, Carol Stream, IL 60188. All rights reserved. Used by permission.

Duplication in any form prohibited without permission or valid license from copyright administrator.

***BLESSING**

SENDING ANNOUNCEMENTS

DISMISSAL: Go in peace. Christ is sending you. **Thanks be to God.**

PRAYER BELL - POSTLUDE: "Pineapple Rag" - Scott Joplin

The postlude sends us out for service in the world. Feel free to use this time in any way that helps to send you out!

Liturgy: Copyright © 2022 Augsburg Fortress. All rights reserved. License # SB118886 - Hymns:
Copyright © OneLicense A-731311

TODAY'S WORSHIP LEADERSHIP AND HOSPITALITY – USHERS: Dave & Kris Peterson;
ASSISTING MINISTER: Jane Jakoubek; READER: Harland Nelson; CANTOR: Jonathon Struve;
FELLOWSHIP: Carol Hasvold, Lindy Moeller; ORGANIST & PIANIST: Brooke Joyce; PREACHER &
PRESIDER: Rev. Dr. Rolf Svanoe

SPECIAL CONGREGATION MEETING TO VOTE ON CARBON NEUTRAL INITIATIVE

Following worship TODAY there will be a special congregation meeting to vote on Mission Green LLC's Carbon Neutral Initiative for Good Shepherd. A Zoom option will be available for those unable to attend in person. Attendance by 82 members (in person plus Zoom) is needed for a quorum. If you are able to help with childcare to allow families to stay, please stick around and talk with Kelli.

ORDER OLIVE OIL FROM THE MOUNT OF OLIVES! If you would like to order olive oil, please sign up at church TODAY or call Martha Monson Lowe, 563-382-4054. Proceeds go to help support Augusta Victoria Hospital on the Mount of Olives in Jerusalem, run by the Lutheran World Federation. - 750 ml \$35, - 250 ml \$15 The order will be placed next week.

TRAVEL ADULT FORUM: Join us after worship next **Sunday the 12th** for a showing of the video, "Why We Travel" produced by Rick Steves. Grab a cup of coffee and come to the Gathering Space. The video is 26 minutes long and explores all the ways we enjoy travel and how travel impacts our lives.

SIGN UP TODAY: We request congregation members to find a way to serve at least one week this summer. Please help fill the many spaces in need:

- **Mow the lawn**
- **Usher, assisting minister, reader, fellowship hour**
- **Video/Audio Volunteers:** We are looking for 2-3 more volunteers to help run the audio and recording of Sunday services. You would be helping on ~1 Sunday a month or as you are able. Please consider helping with this vital work.

DONATIONS NEEDED FOR NEIGHBORS HELPING NEIGHBORS GUATEMALAN BASICS FUND:

The **Guatemalan Basics** initiative provides deliveries of staples - rice, black beans, MaSeCa (corn flour) Tortilla Mix - to local immigrant families, many of whom have migrated from Guatemala.

- **Monetary donations are currently needed**, as many households in the Postville, Decorah, Ridgeway, and Hesper/Mabel areas have increased needs as they are accepting teens and other family members from detention centers around the nation.
- **To make a donation**, you can **give online** by credit/debit card or bank transfer on the Decorah United Church of Christ's web-based giving page. Select "Neighbors Helping Neighbors—Guatemalan Basics Fund" from the dropdown menu: decorahucc.breezechms.com/give/online .
- You can also **write a check**, payable to Decorah UCC with "Guatemalan Basics" in the memo line, and send it to Decorah UCC, PO Box 470, Decorah, IA 52101.

KIDS LUNCH CLUB RETURNS: Kids Lunch Club is a community collaboration to serve delicious, nutritious meals to kids throughout the summer, and is open to all children and youth ages 18 and under. It runs from **Wednesday, June 1 - Friday, August 12.**

Volunteers are needed! Pack and distribute lunches, serve as lead volunteer, donate financially, and join the steering committee. Information is found in the weekly newsletter, on the bulletin board by the Fellowship Hall, and online: kidslunchclub.org



MENTOR WITH HELPING SERVICES FOR YOUTH AND FAMILIES: Take 1 Simple Step, Become A Mentor! By supporting a youth for a minimum of four hours per month you can make a positive impact. Be of service to others in your neighborhood. Be a friend! Become a mentor! Get Involved! Contact Kathy or Colinne at 563-387-1720 or mentoring@helpingservices.org.

CHURCH HOURS IN OFFICE THIS WEEK: Monday-Tuesday: 8:30-3:30 pm, Friday 8:00-10:00 am. Other days I am working from home and will respond to emails and voicemails within 24 hours on business days. **Contact the church office to be connected with a Pastor for Pastoral Care while Pastor Amy is on Sabbatical.**

PRAYER LIST:

Good Shepherd Family: Janet Gall & Liz & Jim Fritz (upon the death of Janet's daughter and Liz's sister, Katherine), Angie Robison (Formerly Sadler), Jerrine Jacobsen, Glenn Nelson, Barbara Berg, Verne Koenig, Melanie Folkerts, Lowell Erdman, Ed Hover, Jutta Anderson, Linda Lambert, all residents and staff at Aase Haugen, Eastern Star, Wellington Place, Mosaic Homes, and Bartels Lutheran Retirement Community, and those preparing for public ministry: Menzi Nkambule, Joseph Tiegen, and Kathryn Thompson

Relatives and Friends: Tim and Sue Broderick (friends of Jerry and Ruth Bruce), Rev. R. David Berg (former pastor of Good Shepherd), Bob Bruce (Son of Jerry & Ruth Bruce), Nathaniel Judisch (son of Dave and Gail), Robin Darland (Friend of Erik Berg), Sid Simpson (Brother in law of Marty Steele), Dennis Martin (brother-in-law of the Slinds), Melissa, Samuel and Declan Isenhardt (daughter and newborn grandchildren of Pam Kranzler), Richard Buresh (brother of Tom Buresh), Kristie & Hana Nelson (family of Knute Nelson), Karen & Randy Erion (friends of Charilyn & Ed Hover), Linda Morgan (sister of Jane Borelli), Nathan Scheuerelein (grandson of Bonnie Flora), Lynzee Makowski (friend of Laurie Biedermann), John Monson (Martha Monson Lowe's father), Jane Hood (Martha Monson Lowe's cousin), Martha Johnson (daughter of Mickey Slind), Erik Wangsness (nephew of Sharon Drew), Todd Hove (son of Gloria Hove), Aaron Buzza (son of Jim and Kathy), Bob Walli, Marilyn Walli, Norm Walli, (cousins of Marv Slind), Joanne Kramer (mother of Kerry Johnson), Katherine Hollander (Liz Fritz's sister), Donna Struve (mother of Jonathon Struve), Marian Brynsaas (sister of LaVerne Ramsey), Mary Beth & Bayo Oyebade and the Mashiah Foundation in Jos, Nigeria, and our Companion Synod in Hungary.

ALL ARE WELCOME AT GOOD SHEPHERD LUTHERAN CHURCH. God makes no exceptions. In the spirit of Jesus Christ, we offer trust and respect to all, including those who may experience alienation, distrust, or rejection. We rely on the healing, unconditional love of God to shape our community in the name of the Good Shepherd. In keeping with our welcome, Good Shepherd is a *Reconciling in Christ* congregation, affirming our welcome to gay, lesbian, bisexual, transgender and queer identifying persons to participate fully in the life of our congregation. We are an *AMMPARO Welcoming Congregation* - Accompanying Migrant Minors with Protection, Advocacy, Representation and Opportunities.

Please sign the red hospitality books for the sake of welcome and as a record of worship attendance. Guests, if you leave your email in the hospitality books, Our office will contact you if there is news of a positive case of COVID in worship.

WELCOME GUESTS. THERE IS A PLACE FOR YOU HERE. We welcome you to Fellowship Hour today after worship!

ALL ARE WELCOME TO SHARE IN HOLY COMMUNION. It is Christ's table and Christ is the host. Instructions are included in the communion section of the Order of Worship.

THE PRESENCE, ENERGY, AND NOISE OF CHILDREN ARE MOST WELCOME HERE. The sound of a child in worship is the sound of a new Christian being formed. This congregation is glad to share in this work. We welcome and encourage kids to move and play. A nursery with toys and activity bags are available. Mothers are welcome to nurse anywhere that works for you and your child. An Infant Feeding Chair is available in the music office (hallway outside of sanctuary) for more privacy if desired.

GOOD SHEPHERD LUTHERAN CHURCH

701 Iowa Avenue, Decorah, IA 52101 563-382-3963 office@goodshepherddecorah.org

goodshepherddecorah.org

Pastor Amy: Cell 563-419-0140, pastoramy@goodshepherddecorah.org